

4

3

2

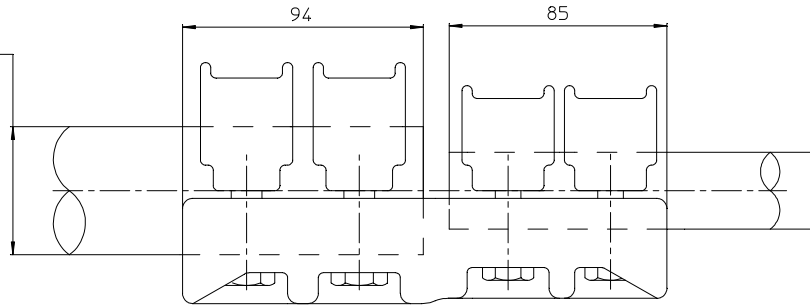
1

© COPYRIGHT 2007 BY TYCO ELECTRONICS CORPORATION ALL RIGHTS RESERVED. TOUS DROITS RESERVES

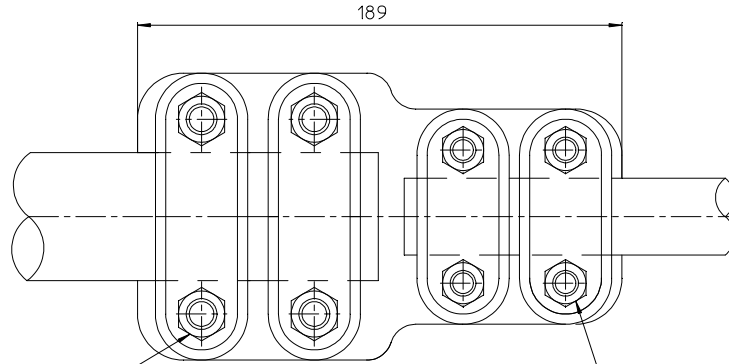
LOC DIST  
FH 00

REVISIONS					
P	LTR REV	DESCRIPTION MODIFICATIONS	DATE	DWN DESS	APVD APPR
A		FF251-94	11-Apr-94	LR	HV
B		EQ00-0195-09	5-Jun-09	EN	LR

Tube ou borne ø46 à 50.99  
 Tube or terminal 46DIA to 50.99  
 Tubo o borna ø46 a 50.99



Cable ou tube ø26 à 30.99  
 Cable or tube 26DIA to 30.99  
 Cable o tubo ø26 a 30.99



60 Nm {  
 4 Boulons ø12 acier inox A2  
 4 Bolts 12DIA stainless steel A2  
 4 Tornillos ø12 acero inoxidable A2

{ 37 Nm  
 4 Boulons ø10 acier inox A2  
 4 Bolts 10DIA stainless steel A2  
 4 Tornillos ø10 acero inoxidable A2

<small>THIS DRAWING IS CONTROLLED BY TYCO ELECTRONICS CORPORATION. IT IS SUBJECT TO THE REVISIONS AND THE ENGINEERING ORGANIZATION OF TYCO ELECTRONICS. SIMEL SHOULD BE CONTACTED FOR THE LATEST REVISION. LE PLAN EST EN DOCUMENT CONTRÔLE PAR TYCO ELECTRONICS CORPORATION. IL EST SUSCEPTIBLE D'ÊTRE REVISÉ. POUR OBTENIR LA DERNIÈRE RÉVISION, CONTACTER LES SERVICES TECHNIQUES DE TYCO ELECTRONICS SIMEL SAS - 21220 GEVELLY CHAMBEREN FRANCE.</small>		DWN /DESSINE NIVONIS 5-Jun-09	<b>SIMEL PRODUCTS</b>	
DIMENSIONS: mm		CHK /VERIFIE VERGUEY 5-Jun-09	NAME TITRE RD 82 50 30	
<small>TOLERANCES UNLESS OTHERWISE SPECIFIED PER TOLERANCES NON SPECIFIEES SELON :-</small>		APVD /APPROUVE ROYER	SIZE FORMAT A3	CAGE CODE 00779
		PRODUCT SPEC SPEC. PRODUIT 02BFC0031	DRAWING NO No PLAN C-711000	RESTRICTED TO RESERVE A -
MATERIAL MATIERE -		APPLICATION SPEC SPEC. APPLICATION -	APPROX. WEIGHT MASSE. APPROX. 2.1 KG	UNIQUEMENT FOUR REFERENCE SCALE ECHELLE 1/2
FINISH FINITION -		CUSTOMER DWG / PLAN CLIENT		SHEET FEUILLE 1 OF DE 1 REV B

ITEM: .....